

UV Flatbed Printer

FY-1325 series

L4840mm×W2250mm×H1470mm



NEW Double-tail flatbed structure for ease of media-loading.

1.22M × 2.44M Print Size

Minimalistic but not simple with speed, resolution, white ink and varnish available.

Specifications

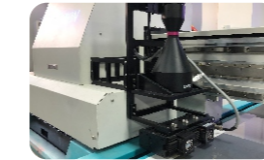
Model		FY-1325G				FY-1325R							
Printhead		SPT 1024GS				Gen 5 / Gen 6							
Print Size		1220mm x 2440mm											
Printhead configuration		One-row 4heads @ 4 colors	two-row 8 heads @ 4 colors	3-row 12 heads @ 4 colors	4-row 16 heads @ 4 colors	One-row 2 heads @ 4 colors	two-row 4 heads @ 4 colors	3-row 6 heads @ 4 colors	4-row 8 heads @ 4 colors				
Print Speed *	4PASS	24m ² /h	45m ² /h	65m ² /h	84m ² /h	14m ² /h	21m ² /h	26m ² /h	46m ² /h	40m ² /h	64.8m ² /h	50m ² /h	83.3m ² /h
	6PASS	16.5m ² /h	31m ² /h	46m ² /h	60m ² /h	9m ² /h	15m ² /h	17m ² /h	26.8m ² /h	25m ² /h	43.1m ² /h	33m ² /h	51.8m ² /h
	8PASS	12.5m ² /h	22m ² /h	36m ² /h	48m ² /h	7m ² /h	11m ² /h	13m ² /h	23m ² /h	20m ² /h	32m ² /h	26m ² /h	43m ² /h

1. The speed data are taken from the printer at high speed, a difference of 10% may occur when running with different computers.
2. Product specifications are subject to change without notice in advance. Color and shape in picture are for reference, computer and monitor not included. All rights reserved!

Features

- Linear motor for more accurate and stable moving on X axis (Optional)
- New generation of Crash-Sensor System can effectively protect print head from physical damage during printing.
- LED water-cooling curing system, which is more convenient in use and better in curing, with longer service life, less energy consumption and more environmentally friendly.
- Metallic Optical Encoder Scale, which is oil resistant, stable in moving with ease of maintenance and accuracy of reading.
- Double-tail flatbed structure for ease of media-loading.
- Ink level Display.

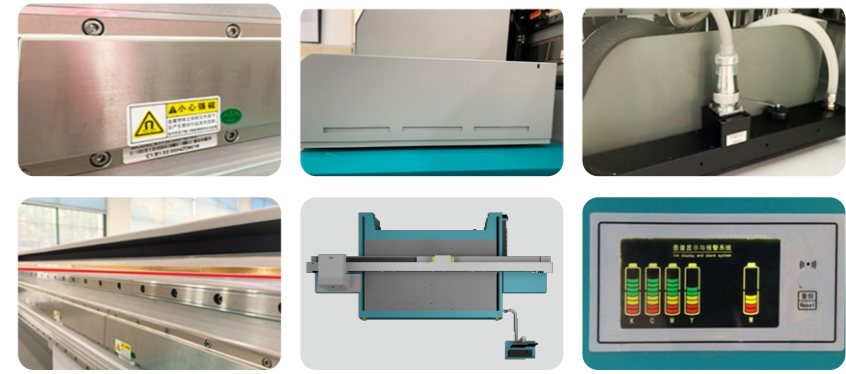
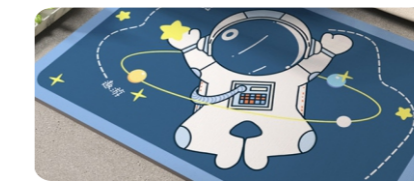
★ AI Scanner Available (Optional)



Technical Parameters

Media weight & thickness: 75KG/m², Max.10CM
 Type: wood, density board, glass, metal, sheet, chevron board, PVC, Acrylic plate, ceramic tiles...
 Ink: UV Curable Ink
 Ink supply system: Negative pressure ink supply
 Curing method: Water-cooling LED Lamps
 RIP: UnitedFancy, FlexiPRINT, Maintop
 Printer: AC220V 50HZ 3800W
 Print Platform Vacuum Hold Down Area: AC220V 50HZ 2200W

Application



Printhead & Layout Options

